

# DESPIECE TÉCNICO TECHNICAL PARTS

Lavavajillas  
Dishwasher

**MODELOS**  
CO-402W

**Febrero 2015 February**  
Revisado Mayo 2015 May Revised



N plano / Drawing N.  
C-3390

Firma /  
Signature  
Iban R

Fecha / Date  
2015-02

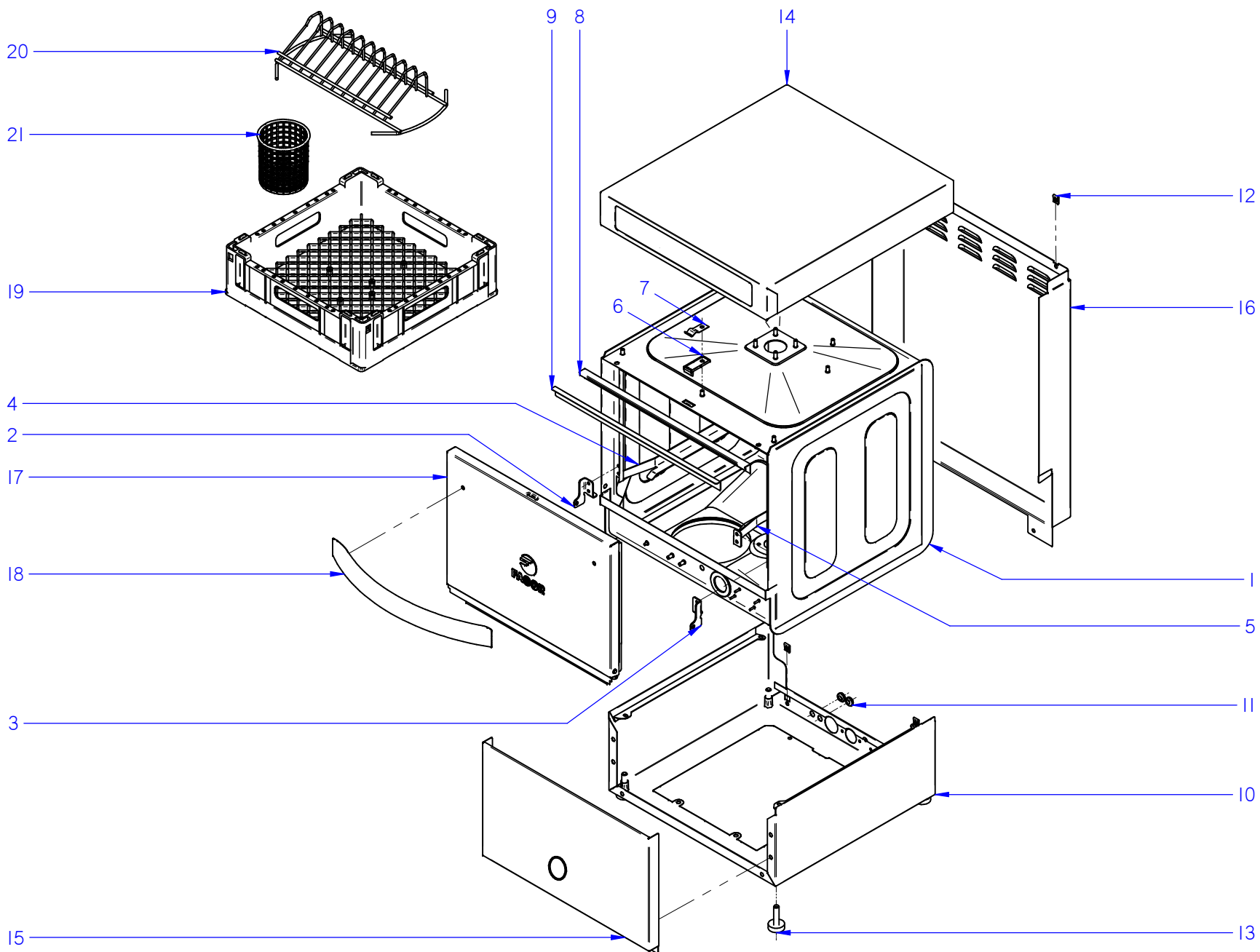
Aparato / Appliance

ARMAZON / FRAME  
CO-402W GLASSWASHER

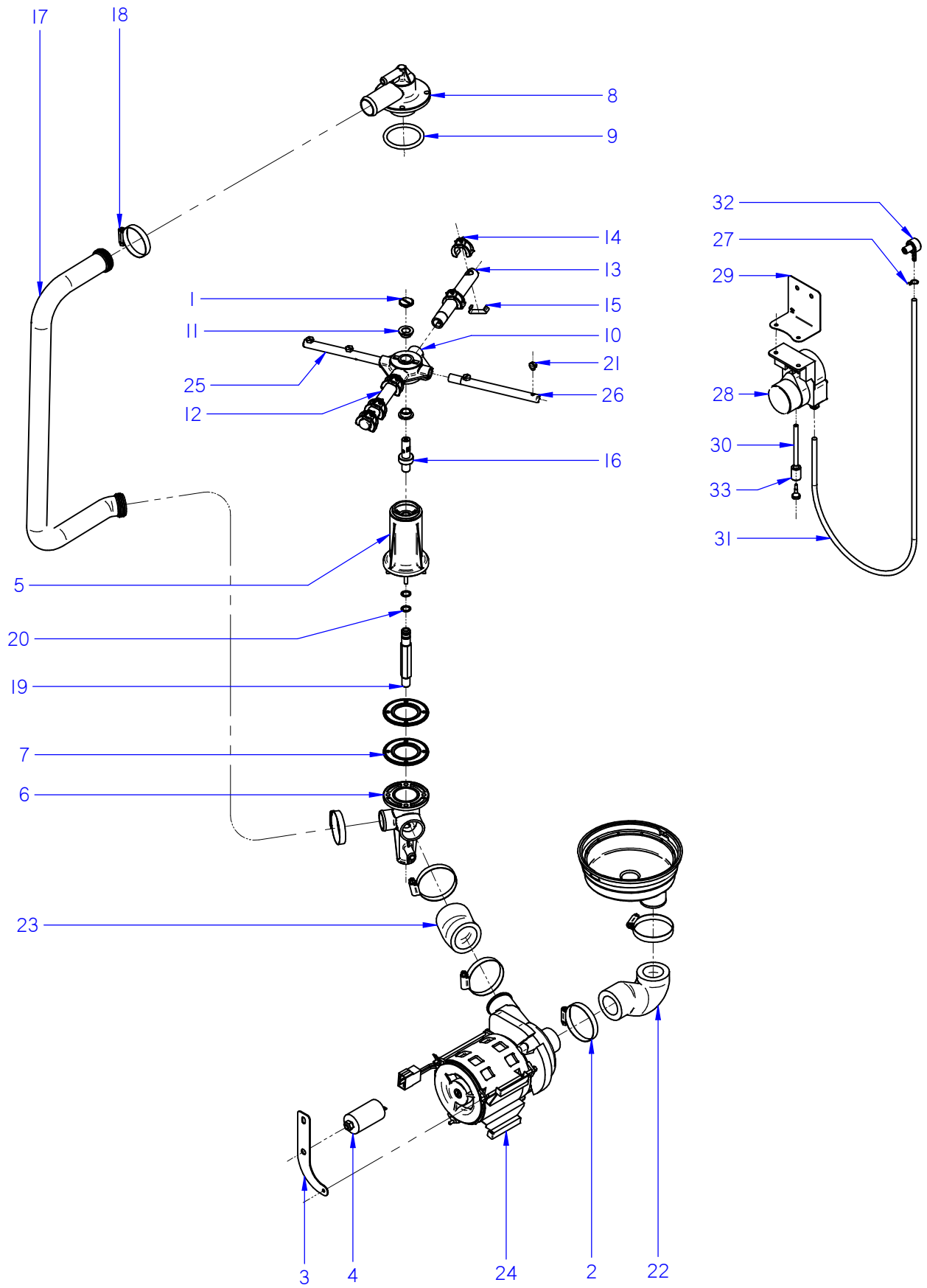
Lamina / Sheet  
1

Fagor Industrial S. Coop. **FAGOR**  
Oparte

ITEM MARCADO EN COLOR = REPUESTO RECOMENDADO  
COLOURED ITEM = RECOMMENDED SPARE PART





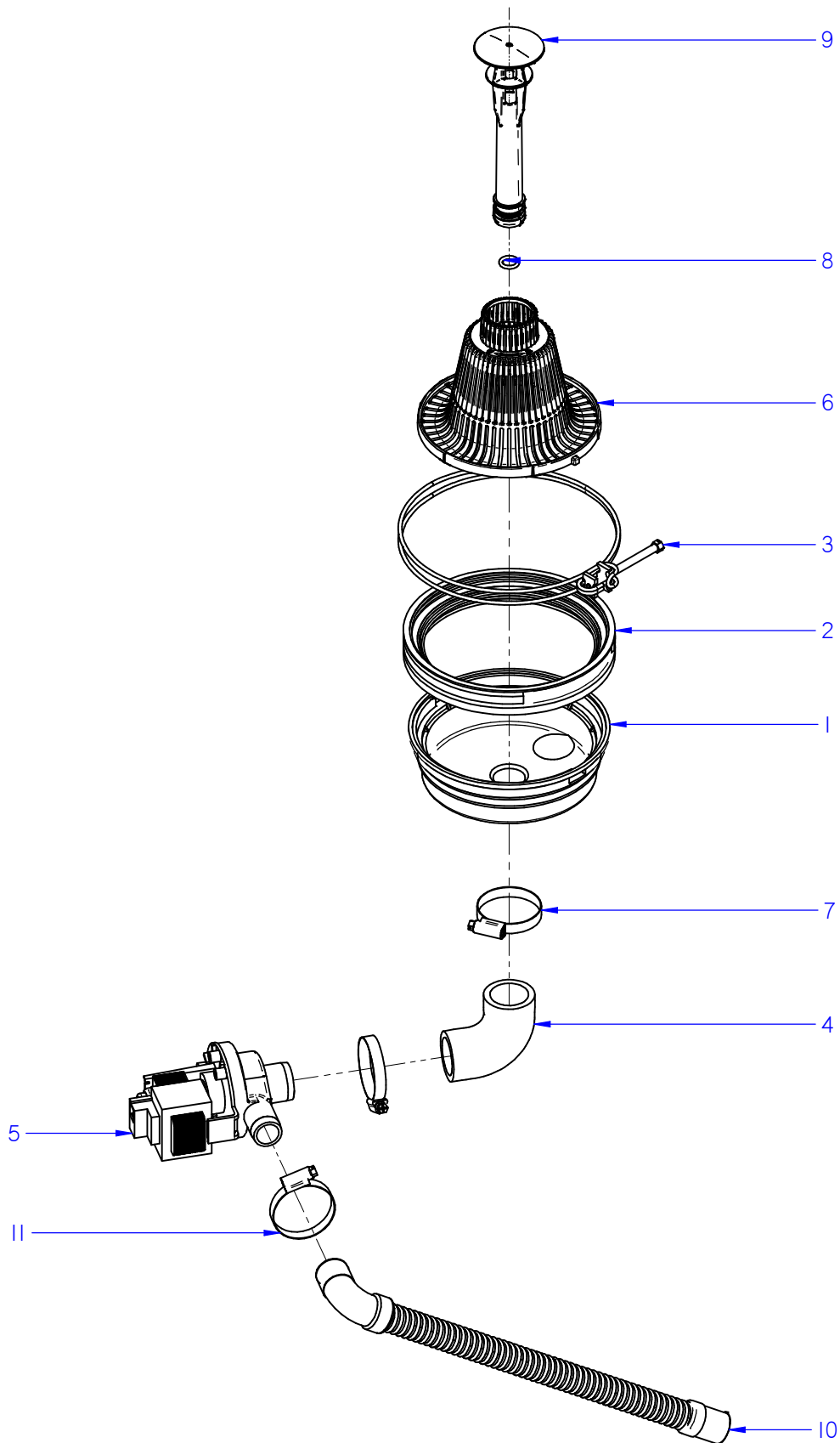


ITEM MARCADO EN COLOR = REPUESTO RECOMENDADO  
 COLOURED ITEM = RECOMMENDED SPARE PART


N plano / Drawing N.	Firma / Signature	Fecha / Date	Aparato / Appliance	PARTE FUNCIONAL LAVADO / WASHING FUNCTIONAL PART	Lamina / Sheet	Fagor Industrial S.Coop. <b>FAGOR</b>
C-3391	Iban R.	02-2015	CO-402W	GLASSWASHER	2	Oñate







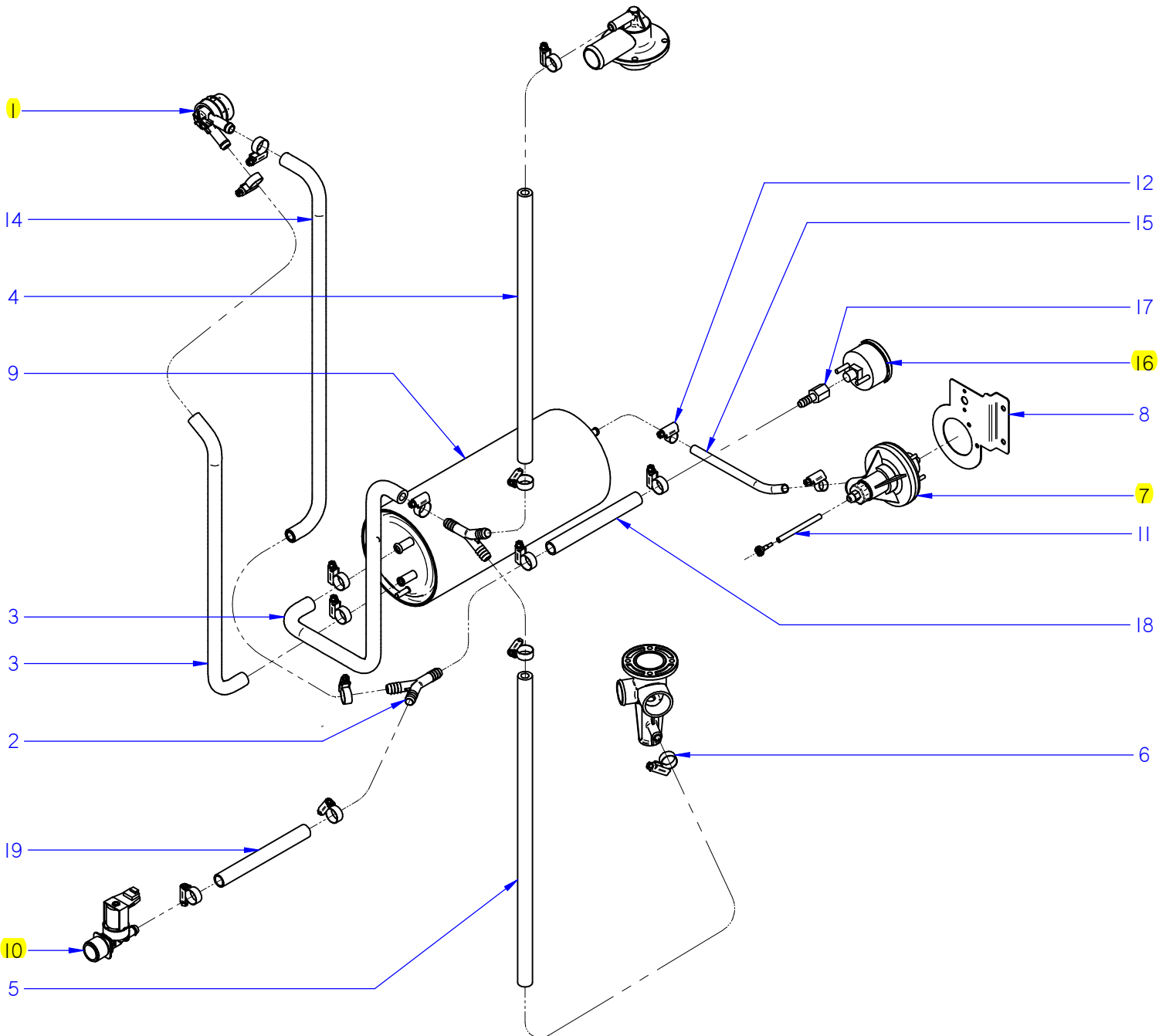
ITEM MARCADO EN COLOR = REPUESTO RECOMENDADO  
 COLOURED ITEM = RECOMMENDED SPARE PART

N plano / Drawing N.	Firma / Signature	Fecha / Date	Aparato / Appliance	PARTE FUNCIONAL LAVADO / WASHING FUNCTIONAL PART	Lamina / Sheet	Fagor Industrial S.Coop. <b>FAGOR</b>
C-3392	Iban R.	02-2015	CO-402W	GLASSWASHER	3	
						Oñate

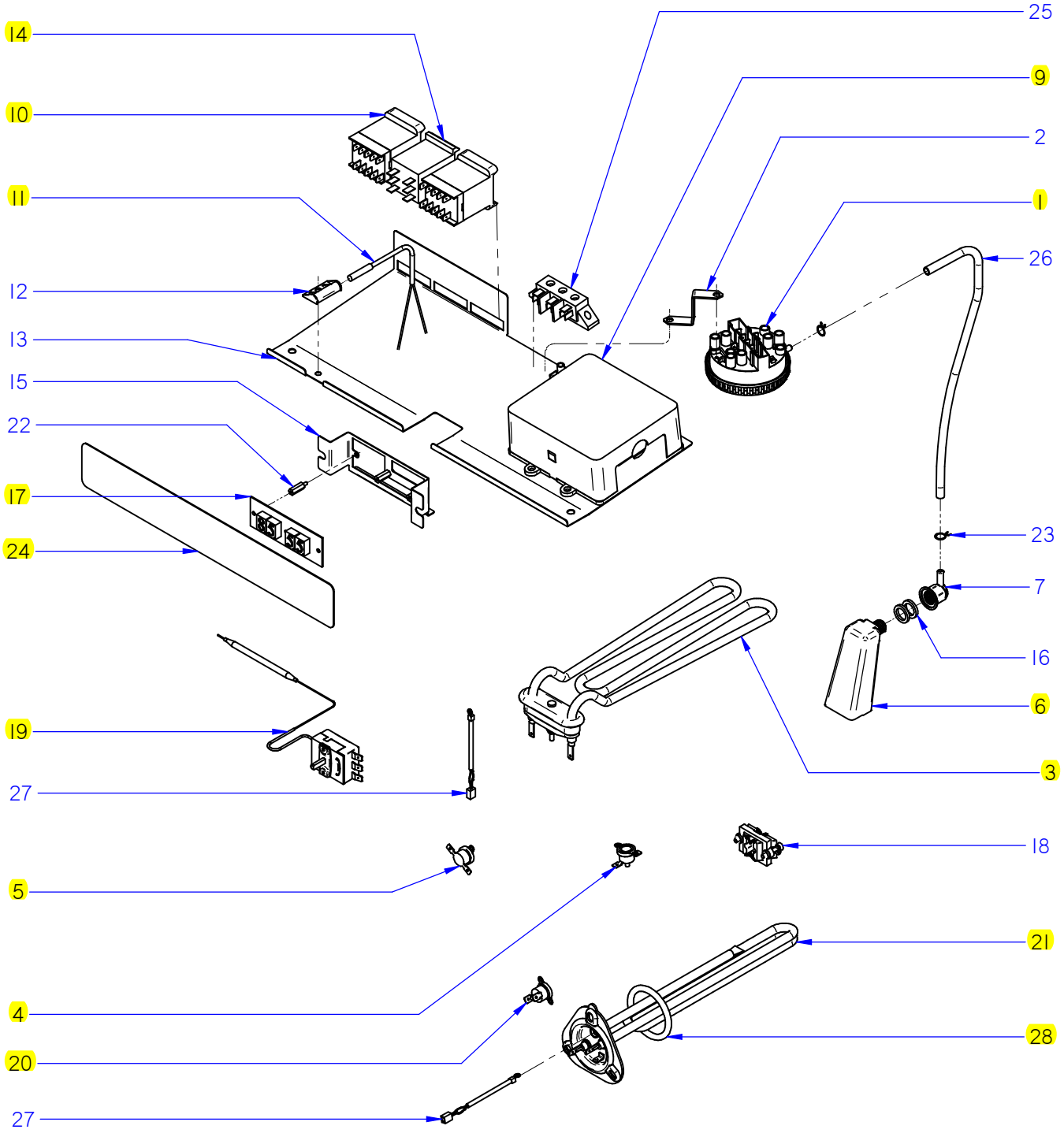


N plano / Drawing N.	Firma / Signature	Fecha / Date	Aparato / Appliance	ACRABADO / RINSING PART	Lamina / Sheet	Fogor Industrial S. Coop. <b>FAGOR</b> Oparte
C-3393	Iban R.	2015-02	LAVAVASOS CO-402W GLASSWASHER		4	

ITEM MARCADO EN COLOR = REPUESTO RECOMENDADO  
 COLOURED ITEM = RECOMMENDED SPARE PART







ITEM MARCADO EN COLOR = REPUESTO RECOMENDADO  
 COLOURED ITEM = RECOMMENDED SPARE PART

N plano / Drawing N.	Firma / Signature	Fecha / Date	Aparato / Appliance	PARTE FUNCIONAL LAVADO / WASHING FUNCTIONAL PART	Lamina / Sheet	Fagor Industrial S.Coop. <b>FAGOR</b>
C-3394	Iban R.	02-2015	CO-402W	GLASSWASHER	5	Oñate

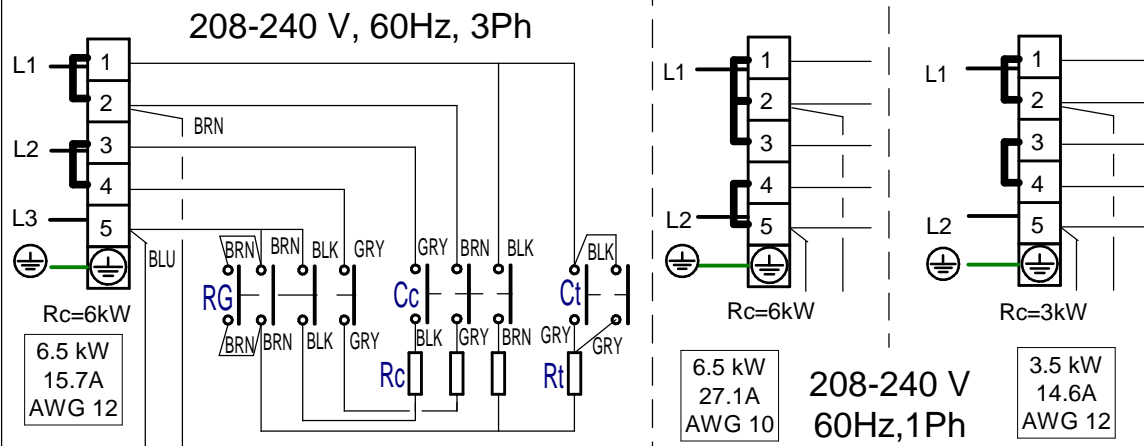




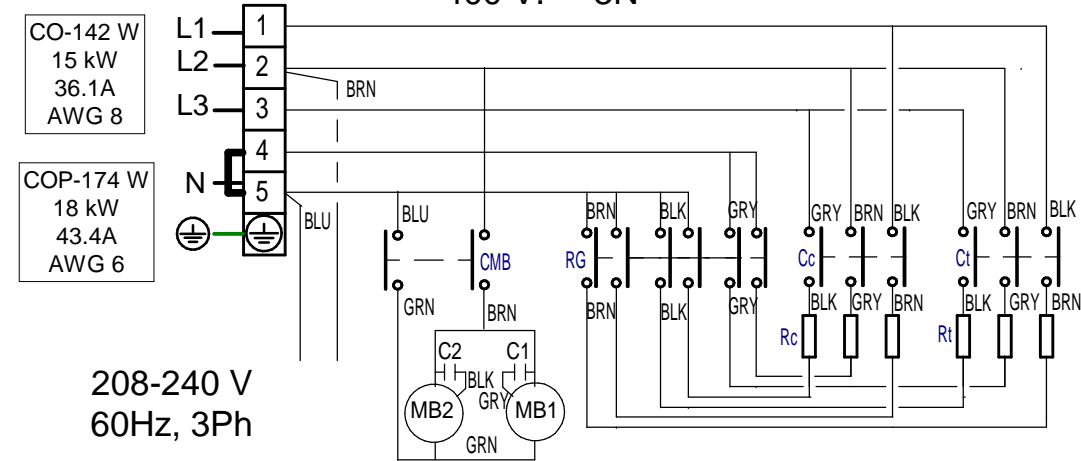




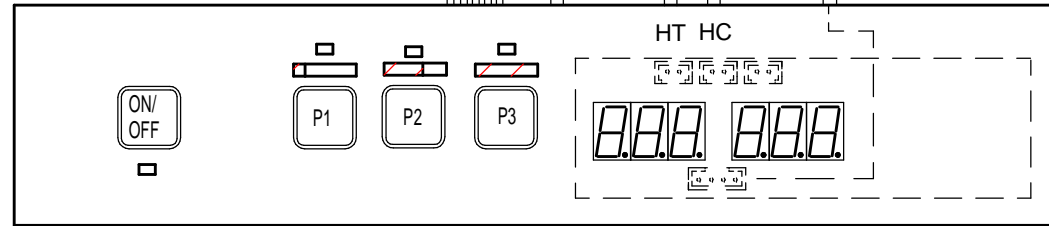
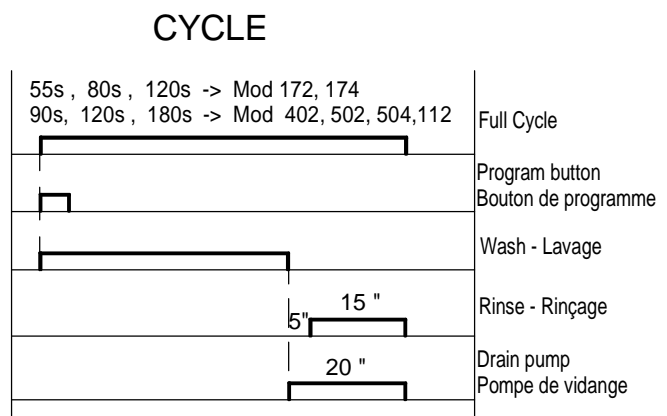
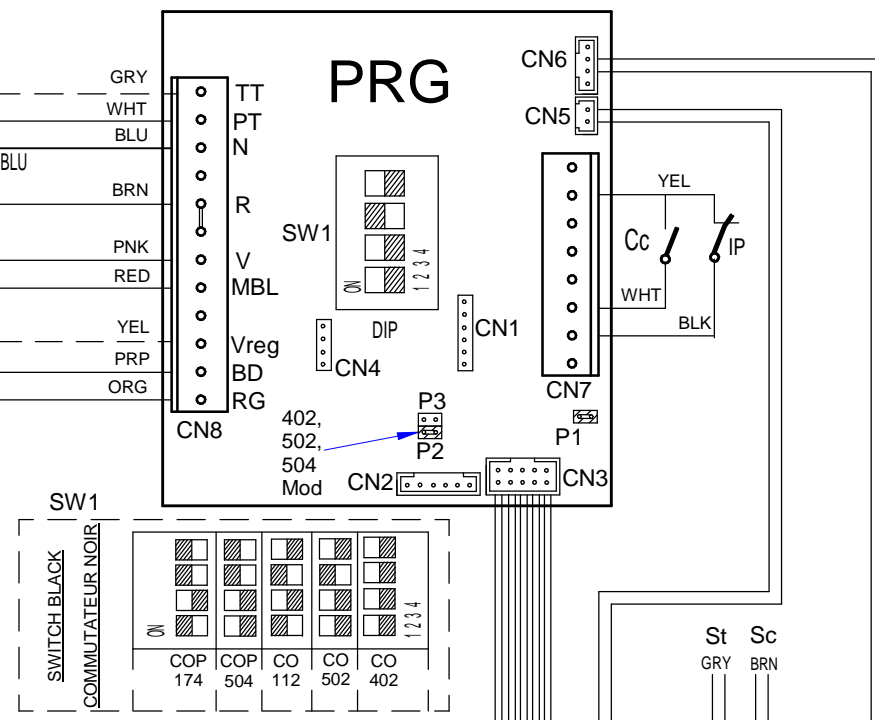
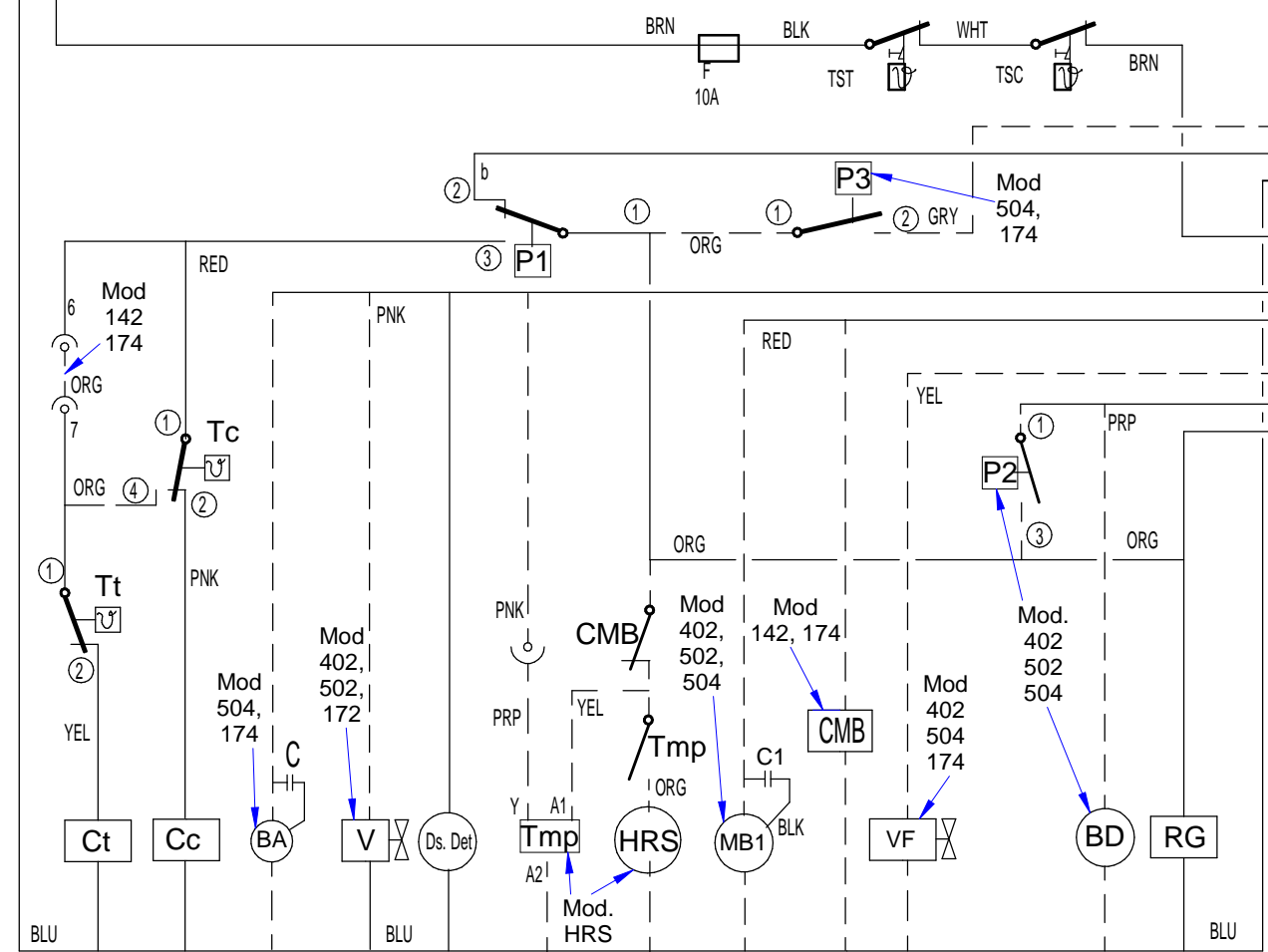
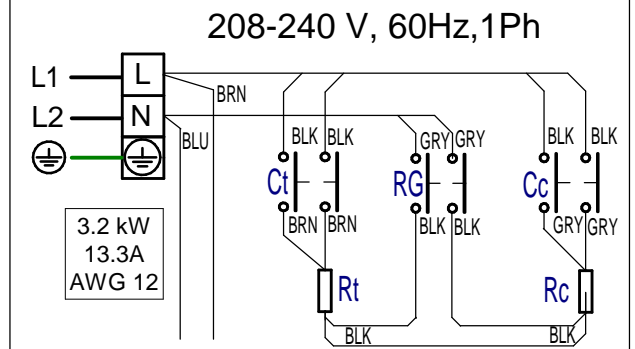
# CO-502 W, COP-504 W



# CO-142W, COP-174 W



# CO-402 W



Ref. 12114451

-	Esquema Teorico CO XX2 W, COP XX4 W	-	12114451		
Nº	TITLE	QTY	CODE	MATERIAL	TREATMENT
GENERAL TOLERANCES:		ISO 2768-1		Very Coarse	
	Fine	Medium	Coarse	Very Coarse	
<3mm	±0.05	±0.10	±0.15	±1°	±3°
3-6mm	±0.05	±0.10	±0.20	±1°	±2°
6-30mm	±0.10	±0.20	±0.50	±20'	±1°
30-120mm	±0.15	±0.30	±0.80	±10'	±30'
120-400mm	±0.20	±0.50	±1.20	±5'	±20'
400-1000mm	±0.30	±0.80	±2.00		
1000-2000mm	±0.50	±1.20	±3.00		
GENERAL TOLERANCE FOR FORM AND POSITION:		ISO 2768-2			
LAVAVAJILLAS			DESIGNED BY	VALIDATED BY	DATE
12114451			M.Maillo	A.gallastegui	11.06.2014
REVISION			PROPOSED BY:	ISSUE DATE:	
			-		
			SHEET: 1 / 1		
			SCALE: 1:1		

