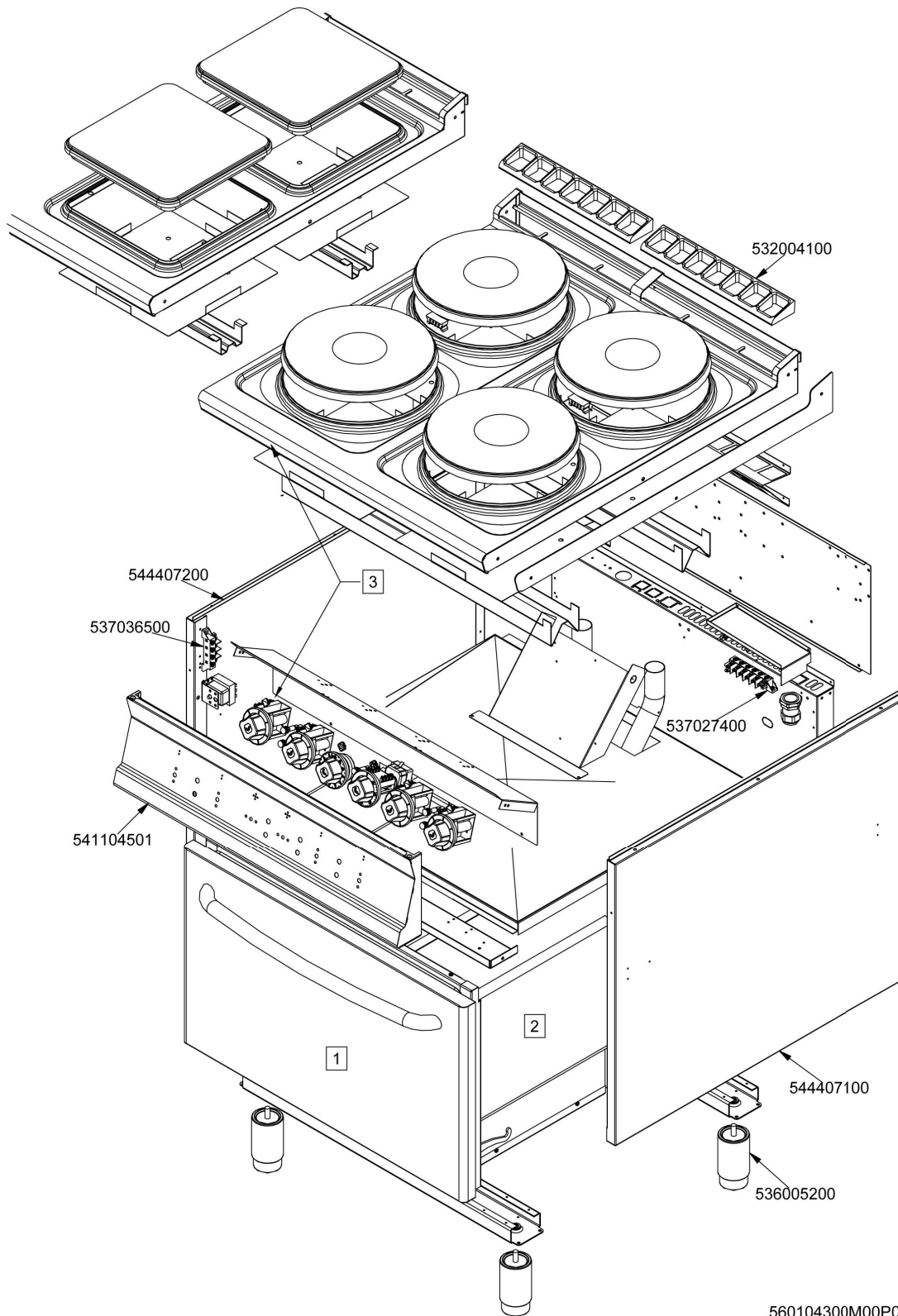




CFV4-98ET (SN>=1201<=1604)
Tav. 560104300M00P00



560104300M00P00

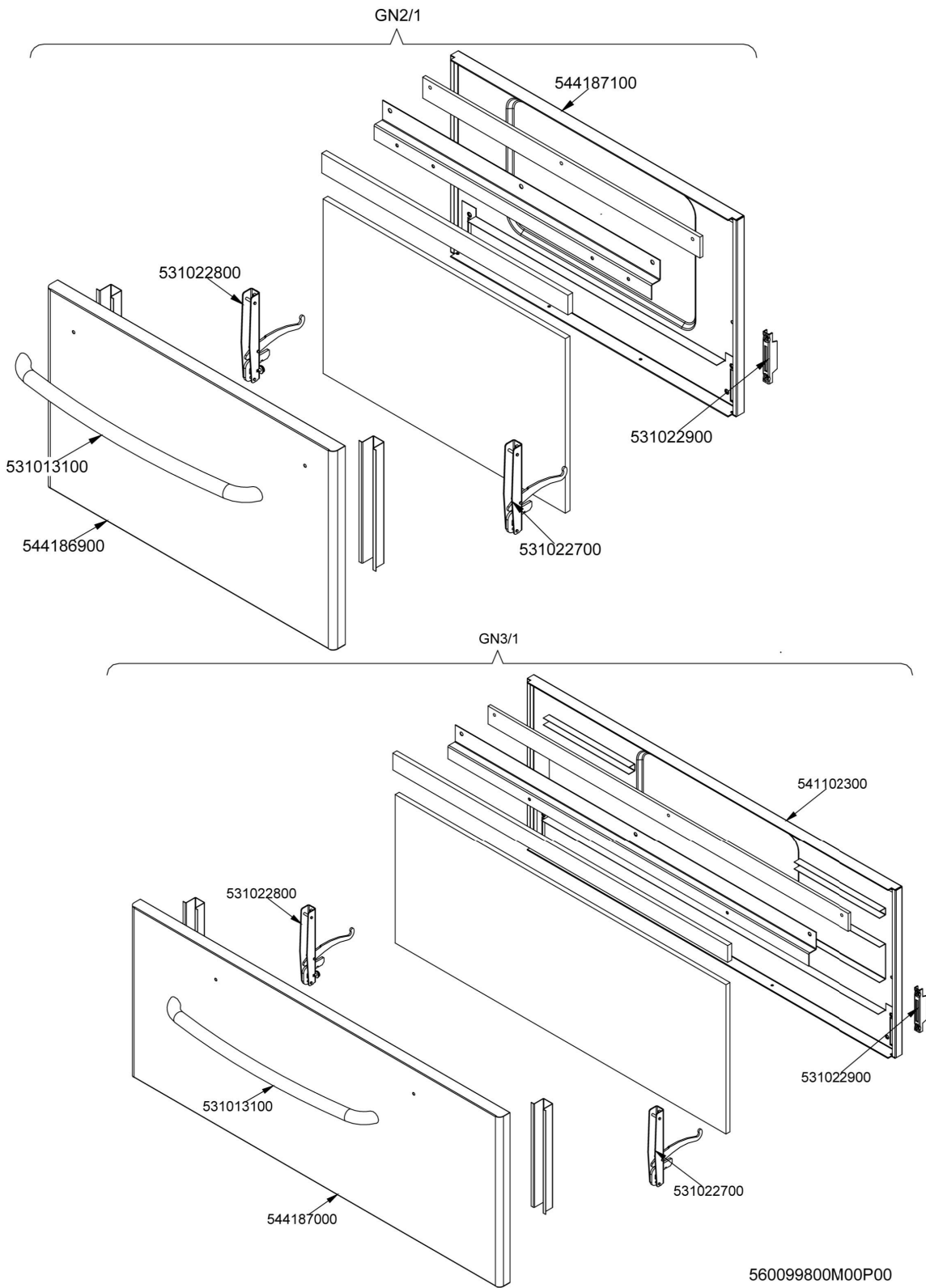


CFV4-98ET (SN>=1201<=1604) - CUCINE CFV4-98ET

Codice	Descrizione
532004100	GRIGLIA SC.FUMI L370 SMALT.RAF
544407200	FIANCO APP.S90M CF SX
537036500	MORSETT.4 POLI 40A VITE-VITE
541104501	ASS.CRUSC.S607090 CF4-98E
544407100	FIANCO APP.S90M CF DX
536005200	PIEDE Ø2" 120-180 M10 INOX
537027400	MORSETT.6 POLI 40A VITE-VITE
-	-
-	-
-	-



FORNO S70 S90 GN2/1 PORTA INOX
Tav. 560099800M00P00



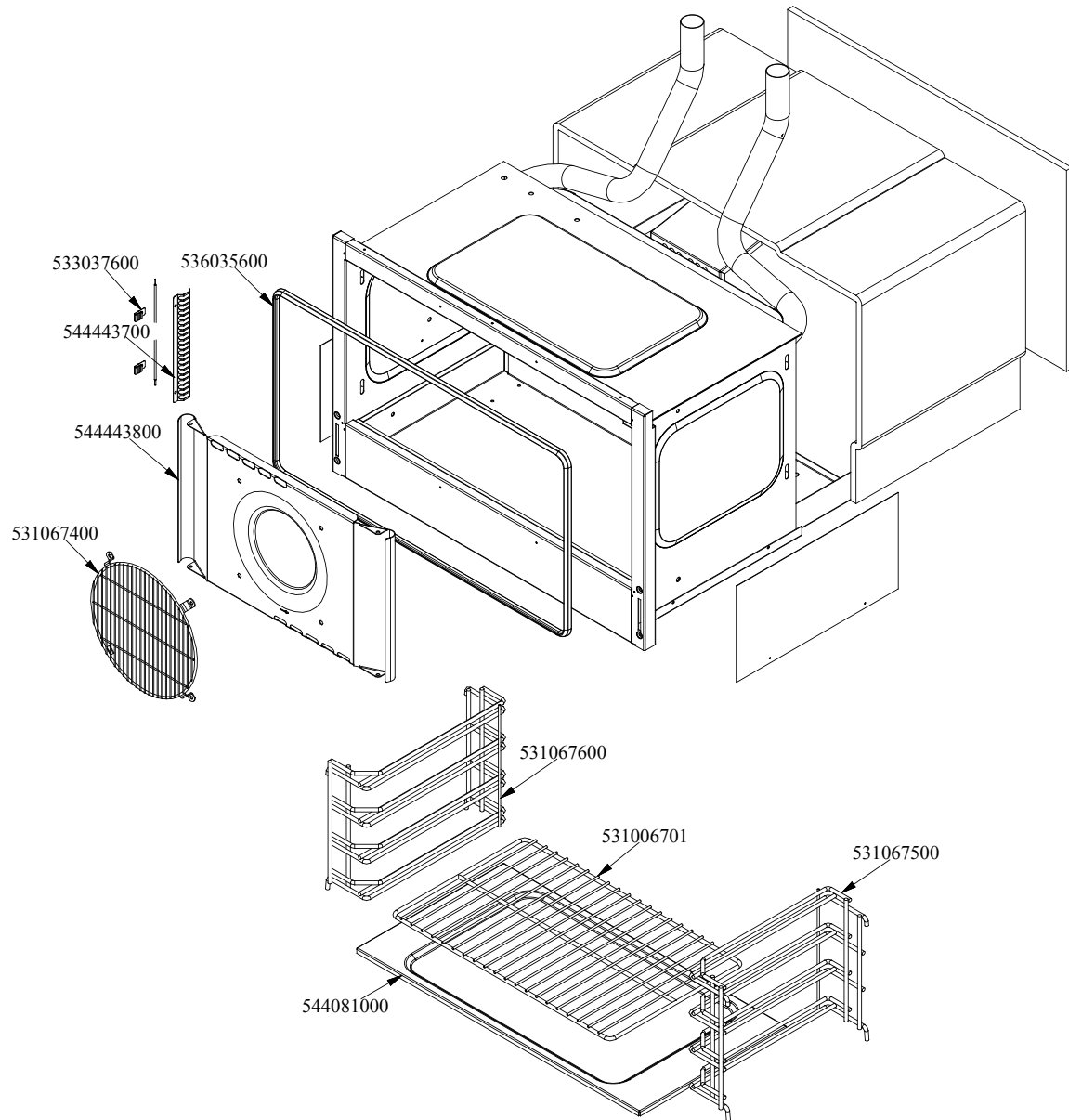


FORNO S70 S90 GN2/1 PORTA INOX - FORNO PORTE_IPERLOTUS

Codice	Descrizione
_GN2/1	CODICE IN ELABORAZIONE
544187100	CONTROP.FORNO GN2/1 S70/90
531022800	CERNIERA PORTA F.Ø4 S70/90 DX
531013100	MANIGLIA PORTA FORNO S70/90 INOX
544186900	PORTA FORNO GN2/1 S70/90
531022700	CERNIERA PORTA F.Ø4 S70/90 SX
531022900	PORTARULL.CERN.PORTA F.S70/90
GN3/1	CODICE IN ELABORAZIONE
541102300	ASS.CONTROP.FORNO GN3/1 S70
531022800	CERNIERA PORTA F.Ø4 S70/90 DX
531013100	MANIGLIA PORTA FORNO S70/90 INOX
544187000	PORTA FORNO GN3/1 S70/90
531022700	CERNIERA PORTA F.Ø4 S70/90 SX
531022900	PORTARULL.CERN.PORTA F.S70/90



FORNO S70 S90 GN1/1 ELETTRICO VENTILATO CARCASSA
Tav. 560095100M00P00



5600951 00M00P00

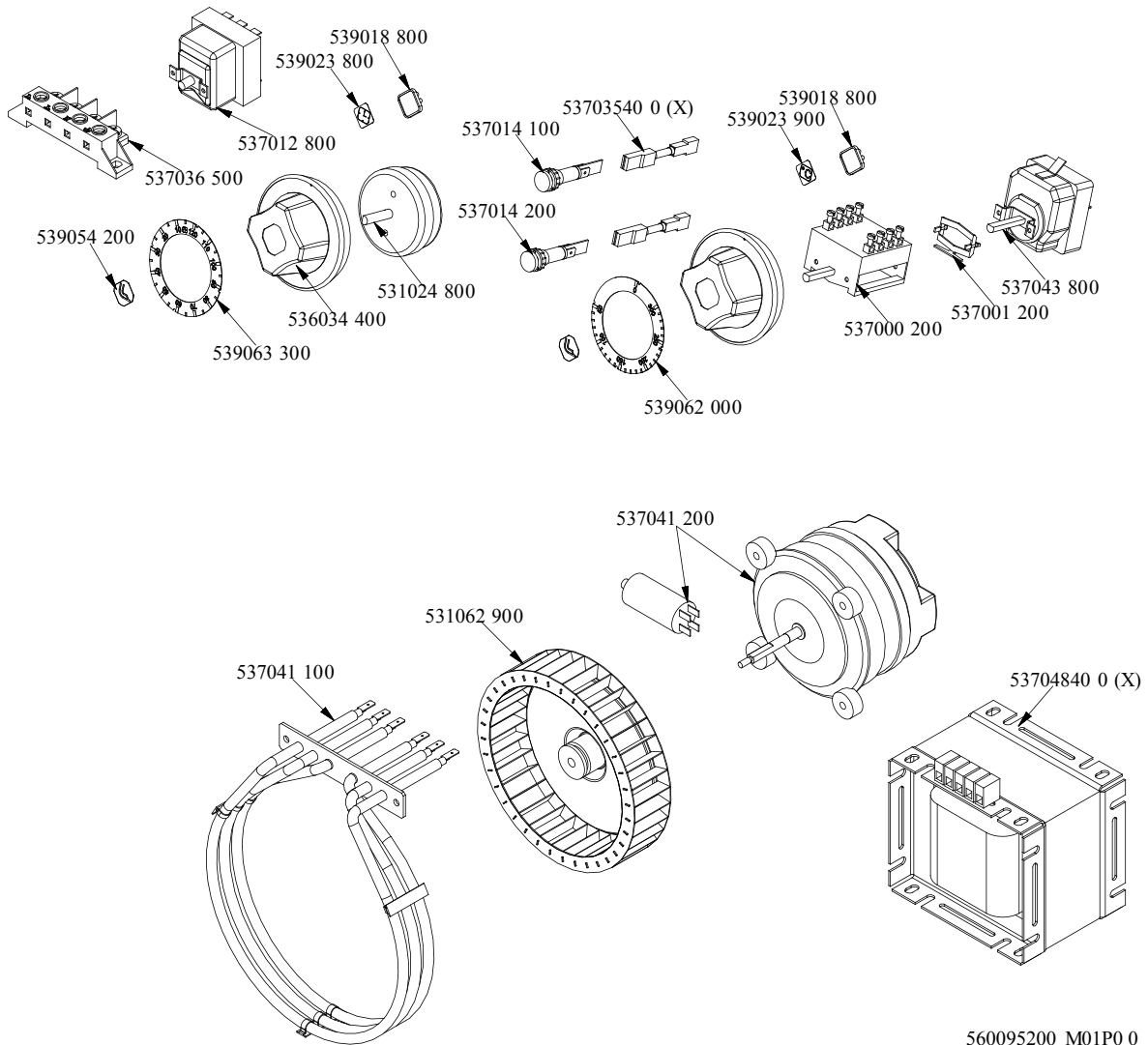


FORNO S70 S90 GN1/1 ELETTRICO VENTILATO CARCASSA - COMPONENTI COMUNI
ELETTRICOVENTILATO

Codice	Descrizione
533037600	MOLLA FISS.BULB.Ø3/Ø4 PIATTA BR.
536035600	GUARNIZ.FORNO GN1/1 S70/90 VENT.
544443800	PANN.DIFF.ARIA.F.VENT.S70
531067400	GRIGLIA PROT.VENT.FORN.VENT.S70
531067600	PORTAGRIGLIA FORNO S70 SX GN1/1
531006701	GRIGLIA FORNO MAXI S60T/65/60
531067500	PORTAGRIGLIA FORNO S70 DX GN1/1
544081000	SUOLA FORNO EL.GN1/1 S55
544443700	PROTEZIONE BULBO FORNO VENTILATO



MFV-78ET (SN>=1201<=1604)
Tav. 560095200M01P00



560095200 M01P0 0

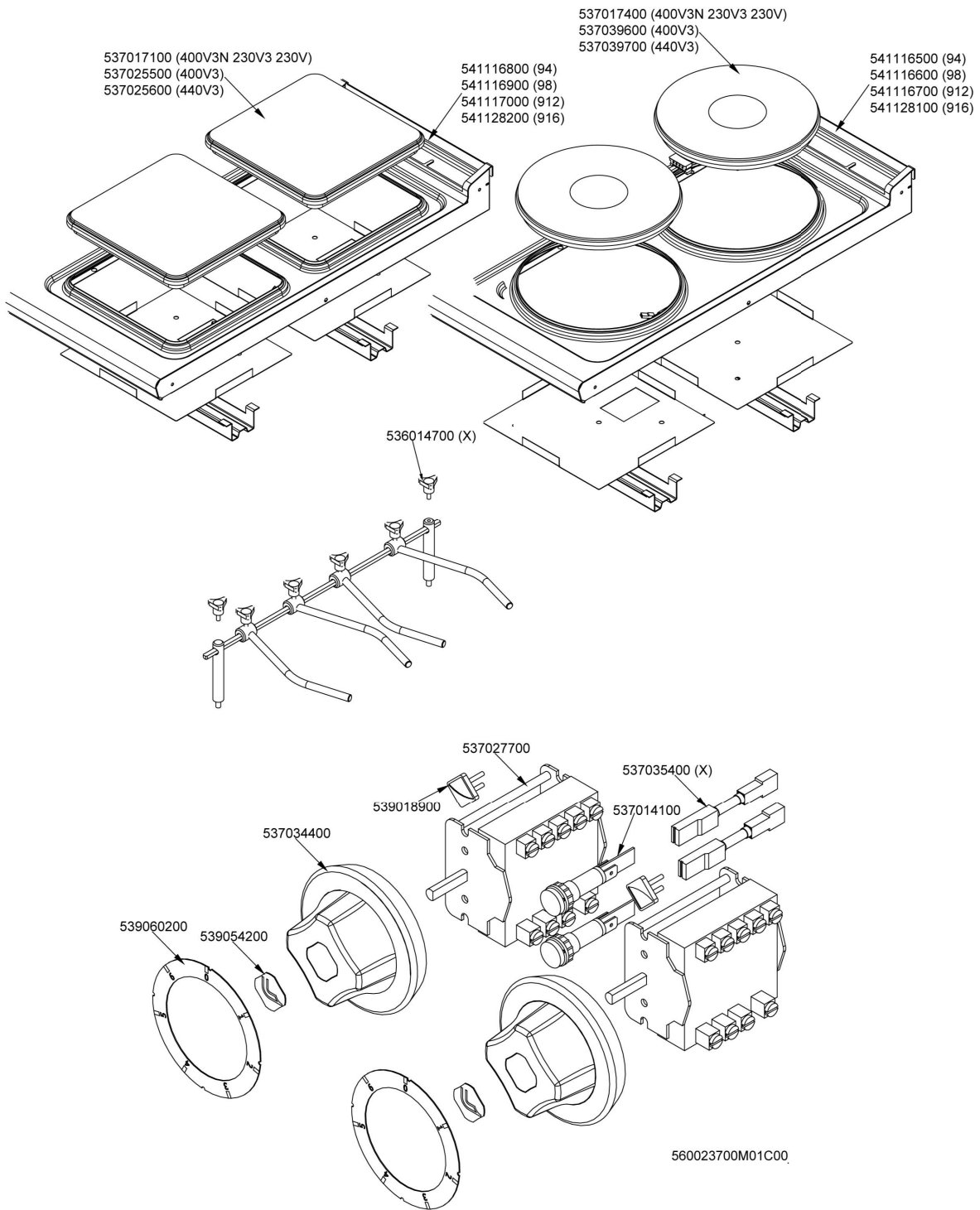


MFV-78ET (SN>=1201<=1604) - BASE CON FORNO ELTRICO VENTILATO MFV-78ET

Codice	Descrizione
539054200	BOLLINO Ø20,3 CR."L" LOTUS R.
537036500	MORSETT.4 POLI 40A VITE-VITE
537012800	TERMOST.SIC.TRIF. 420°C
539023800	ET.AD.IND.TYMER FORNO
539018800	INDICE MAN.C/VANO ETICHETTA
539063300	DISC.72.TYMER MECCANICO
536034400	MANOP.Ø77 4 P.Ø06X4,6 NERO C/M
531024800	TIMER MECCANICO 120'
537014200	SPIA G.B.VERDE 250VAC F.M.
537014100	SPIA G.B.BIANC.250VAC F.M.
539023900	ET.AD.IND.TEMPERATURA FORNO
539018800	INDICE MAN.C/VANO ETICHETTA
537043800	TERMOST.F.TRIF. 048-300°C GAMB.L
537001200	STAFF.FISS.COMM.S49 TERMOST.3,5
537000200	COMM.1 POS.3F 16A
539062000	DISC.72.FORN.S70 E.ST.TERM.
537041100	RES.COR.FOR.VENT 5200W 3-230V
531062900	VENTOLA Ø180 FORNO VENTIL.S70
537041200	MOTOVENT.FORNO VENT. S70 C/COND.



COMANDO E PIANO PC-E S90 (SN<=1604)
Tav. 560023700M01C00





COMANDO E PIANO PC-E S90 (SN<=1604) - COMPONENTI COMUNI COMANDO_E_PL
E_PCT-E(

Codice	Descrizione
541116500	ASS.PIANO S90 PC-94E
541116600	ASS.PIANO S90 PC-98E
541116700	ASS.PIANO S90 PC-912ET
541128100	ASS.PIANO S90 PC-916ET
537017400	PIASTRA GHISA Ø300 3500W230V
537039600	PIASTRA GHISA Ø300 3500W400V
537039700	PIASTRA GHISA Ø300 3500W440V
541116800	ASS.PIANO S90 PCQ-9 4E
541116900	ASS.PIANO S90 PCQ-9 8E
541117000	ASS.PIANO S90 PCQ-912E
541128200	ASS.PIANO S90 PCQ-916E
537017100	PIASTRA GHISA 300X300 4000W230V
537025500	PIASTRA GHISA 300X300 4000W400V
537025600	PIASTRA GHISA 300X300 4000W440V
536014700	VOLANTINO A 3 PUNTE M6X15
537035400	RES.ELETR.3W 330KOHM C/F
537014100	SPIA G.B.BIANC.250VAC F.M.
537027700	COMM.7 POS.32A PC
539018900	INDICE MAN.C/FRECCIA ROSSA
537034400	RES.IRR.470X270 9500W 3-230V (S)
539054200	BOLLINO Ø20,3 CR."L" LOTUS R.
539060200	DISC.72.7 POS.PC -E R.