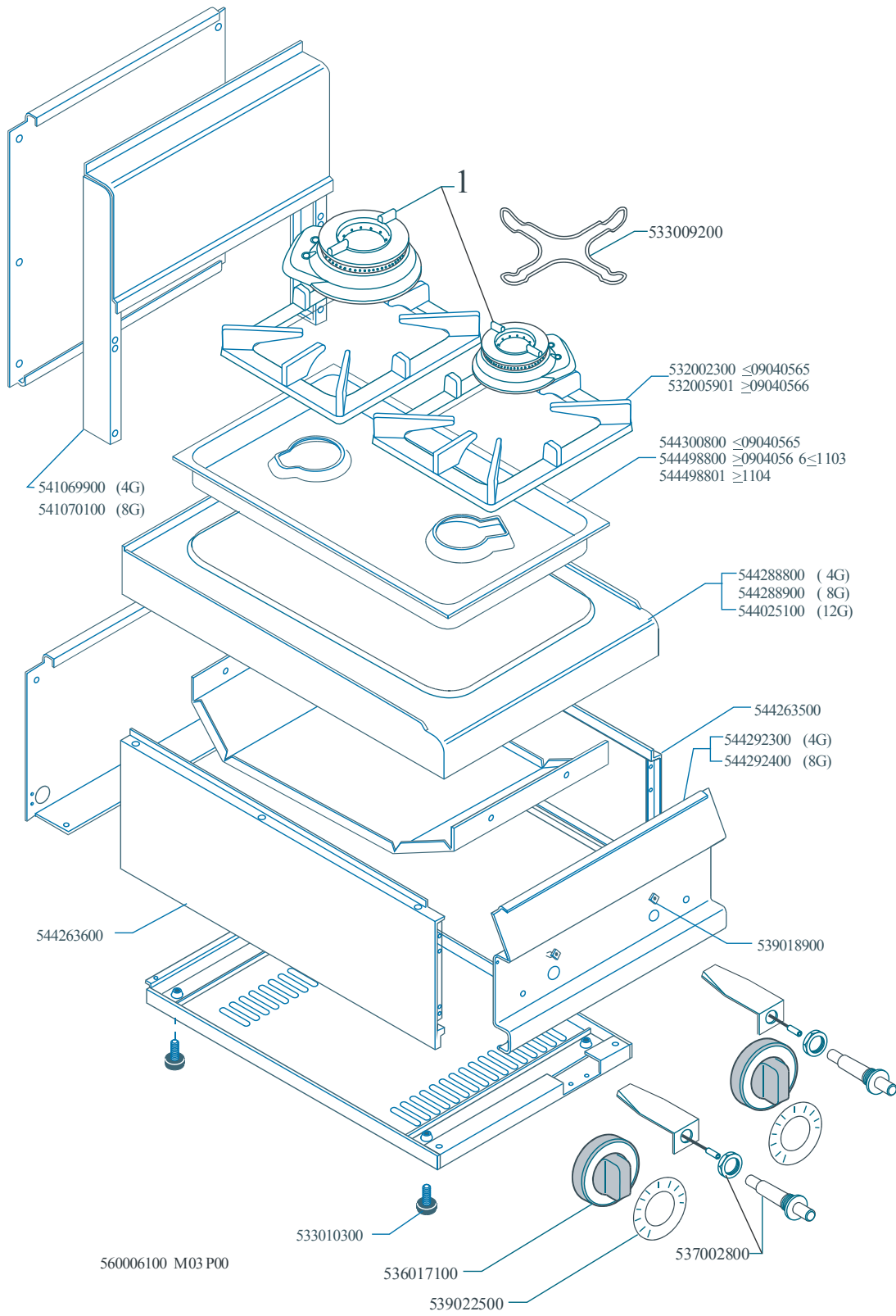




PC-8G
Tav. 560006100M03P00





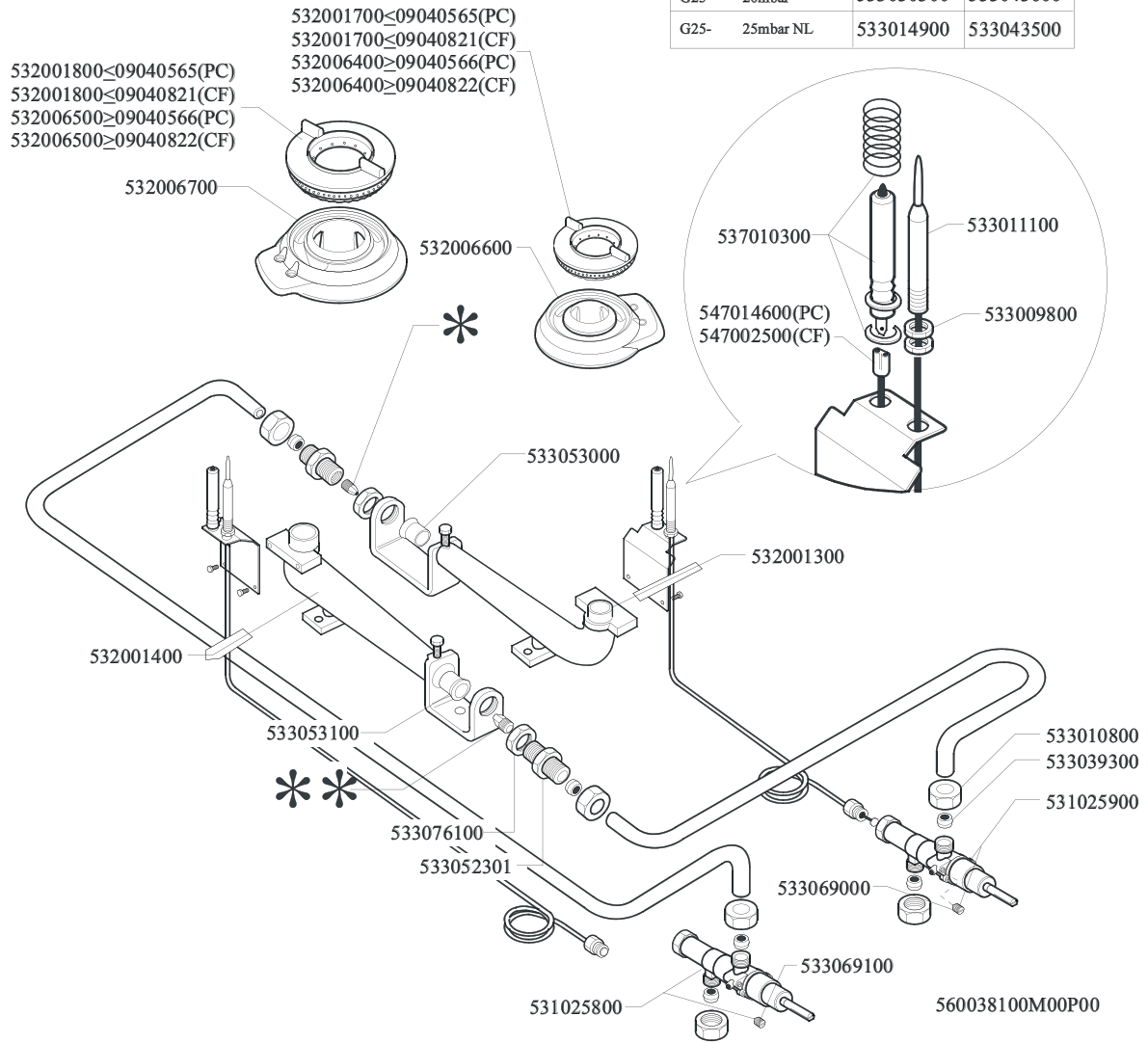
PC-8G - GAS PC-8G

Codice	Descrizione
533009200	GRIGLIA RID.FUOCHI S65 S70/90 FO
532002300	GRIGLIA PC S65 344X272 1F.SM.N.(S)
532005901	GRIGLIA PC S65 340X270 1F.RAF
544300800	BAC.BRU.S65 PC GN1/1 SM.N.LUC. (S)
544498800	BAC.BRU.S65 PC GN1/1 SM.N.RAF (S)
544498801	BAC.BRU.S65 PC GN1/1 AISI 304
541070100	ASS.DIST.S65 8 NEUTRO
544288900	PIANO S65 PC- 8G CF4-8G/GEM
544263500	FIANCO APP.S65T DX
544292400	CRUSC.S65 PC-8G
539018900	INDICE MAN.C/FRECCIA ROSSA
544263600	FIANCO APP.S65T SX
533010300	PIEDE Ø23 012-022 M10 PLAST.
536017100	MANOP.Ø70 PEL. Ø08X6,5 SEDE PERP.
539022500	DISC.64.PC-G R.
537002800	PIEZOELETT.M18X1,5 C/D
-	-



COMANDO E BRUCIATORE PC-G S65 R UR
Tav. 560038100M00P00

	*	**
G30- 28+30mbar G31- 37mbar	533015400	533043400
G30- 50mbar	533015300	533043300
G20- 20mbar G25- 25mbar	533015200	533019400
G25- 20mbar	533030300	533043600
G25- 25mbar NL	533014900	533043500





COMANDO E BRUCIATORE PC-G S65 R UR - COMPONENTI COMUNI COMANDO_PC-G

Codice	Descrizione
532001700	SPARTIF.D.CORONA Ø082 S65 (S)
532006400	SPARTIF.D.CORONA Ø082 3 Z S60T
532001800	SPARTIF.D.CORONA Ø102 S65 (S)
532006500	SPARTIF.D.CORONA Ø102 3 Z S60T
532006700	CORPO BRU.L1 5,5KW C/S S60 NICH
532006600	CORPO BRU.L1 3,5KW C/S S60 NICH
533011100	TC G.M08X1 0750
537010300	CAND.ACC.FAST.M2,8X0,8 MOLLA 2 S
547014600	CAV.AT F.F2,8X0,8-TUB.Ø2 L0800
533053000	BOCCOLA REG.ARIA Ø18 EST.ALT.38
532001300	VENTURI BRU.L1 3,5KW S65
532001400	VENTURI BRU.L1 5,5KW S65
533053100	BOCCOLA REG.ARIA Ø20 EST.ALT.38
533076100	BOCCOLA CENTR.Ø20 (S)
533052301	RACC.PORTAINIETT. 0°CANN.Ø10
533010800	DADO ES.X BIC.Ø10 M16X1,5
533039300	BICONO Ø10
531025900	RUB.GAS 20S P.V.BY-P.Ø070
533069000	BY-P.RUB.20S-21S Ø070
533069100	BY-P.RUB.20S-21S Ø060
531025800	RUB.GAS 20S P.V.BY-P.Ø060
533015400	INIETTORE CH12X14,0 Ø093
533015300	INIETTORE CH12X14,0 Ø082
533015200	INIETTORE CH12X14,0 Ø145
533030300	INIETTORE CH12X14,0 Ø160
533014900	INIETTORE CH12X14,0 Ø150
533043400	INIETTORE CH12X14,0 Ø117
533043300	INIETTORE CH12X14,0 Ø103
533019400	INIETTORE CH12X14,0 Ø180
533043600	INIETTORE CH12X14,0 Ø200
533043500	INIETTORE CH12X14,0 Ø190