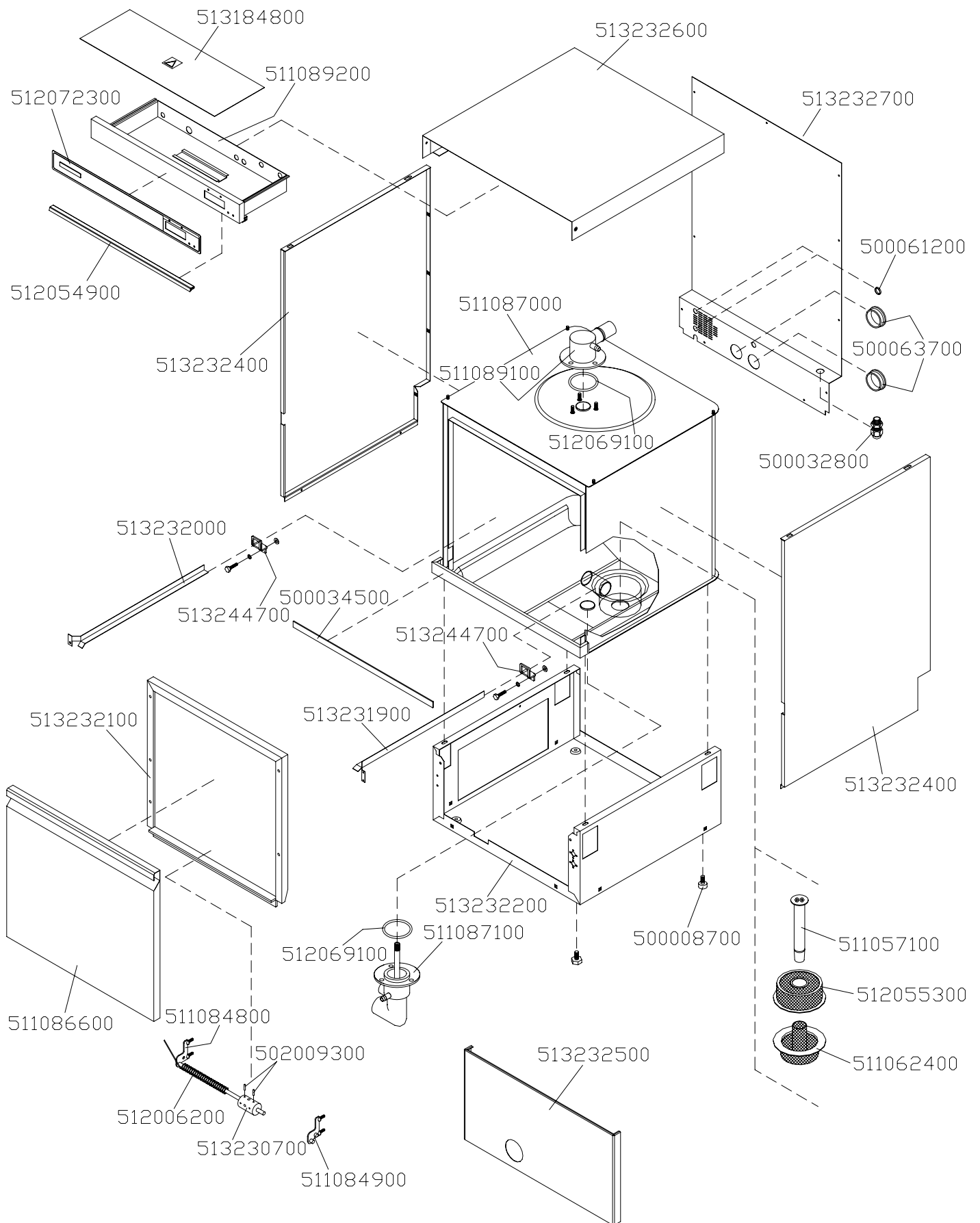


Mod. MLP 50

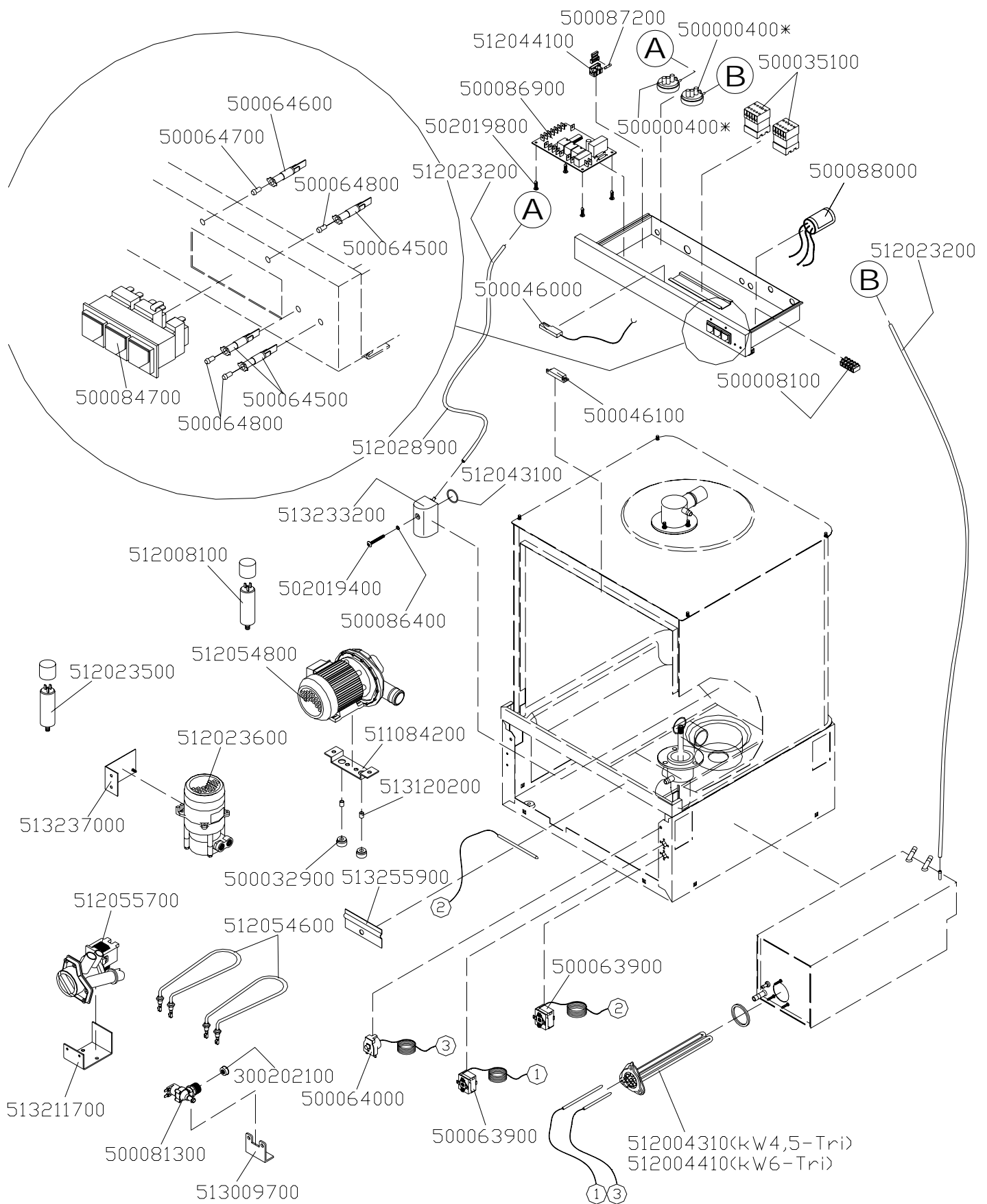
(in produzione fino a Maggio 2010)



esterno/external

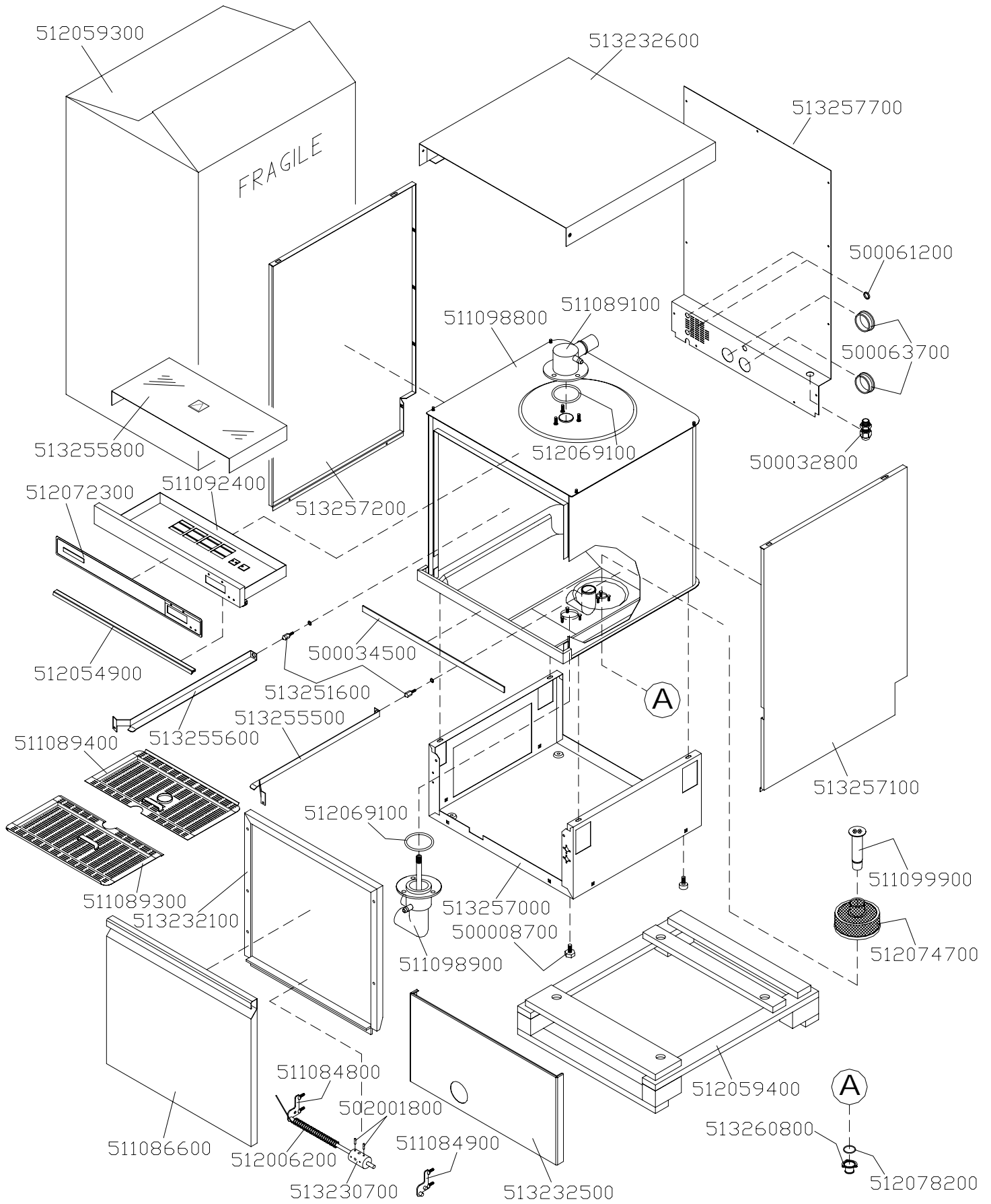
Mod. MLP 50

(in produzione fino a Maggio 2010)



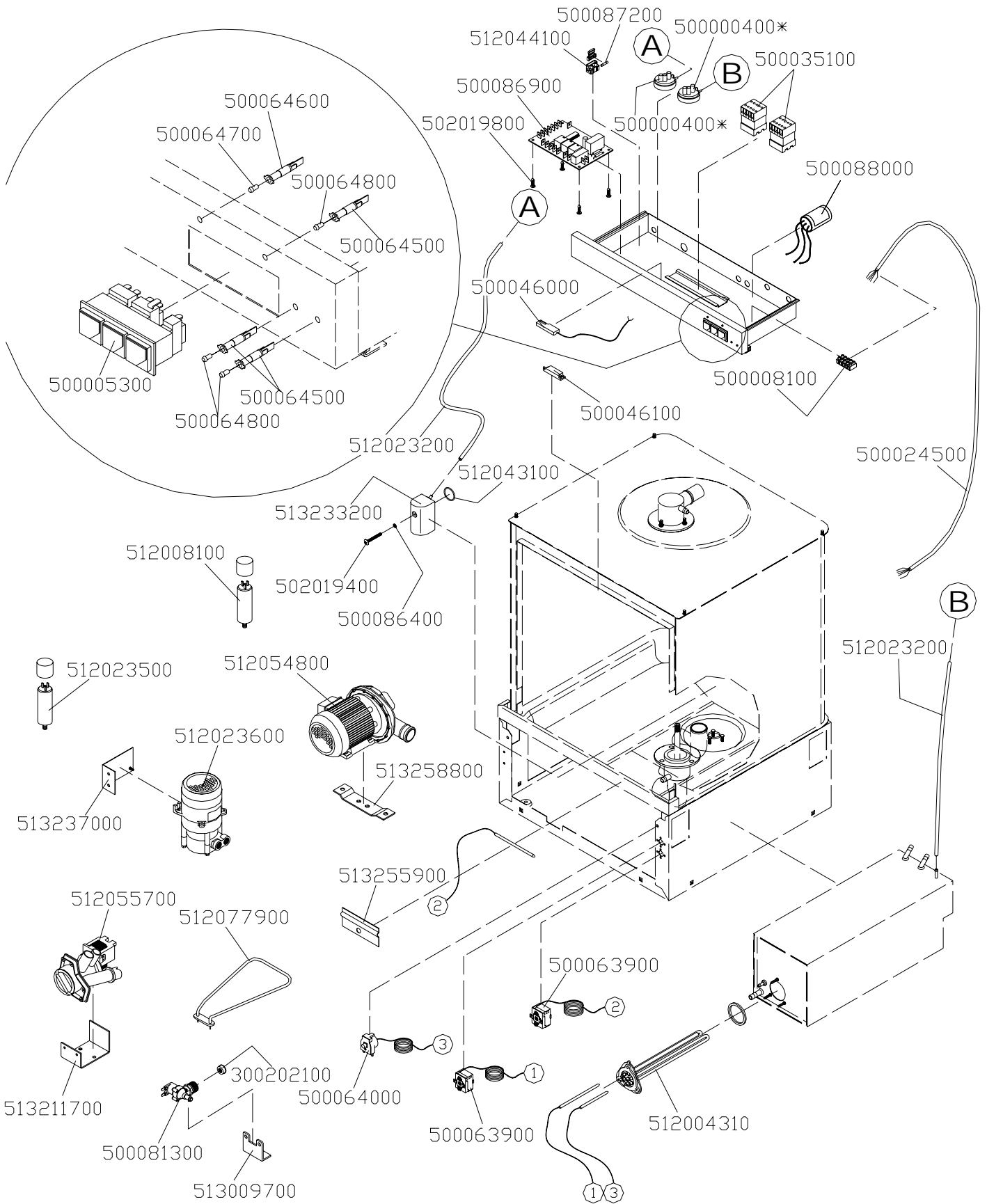
elettrico/electrical

Mod. MLP 50



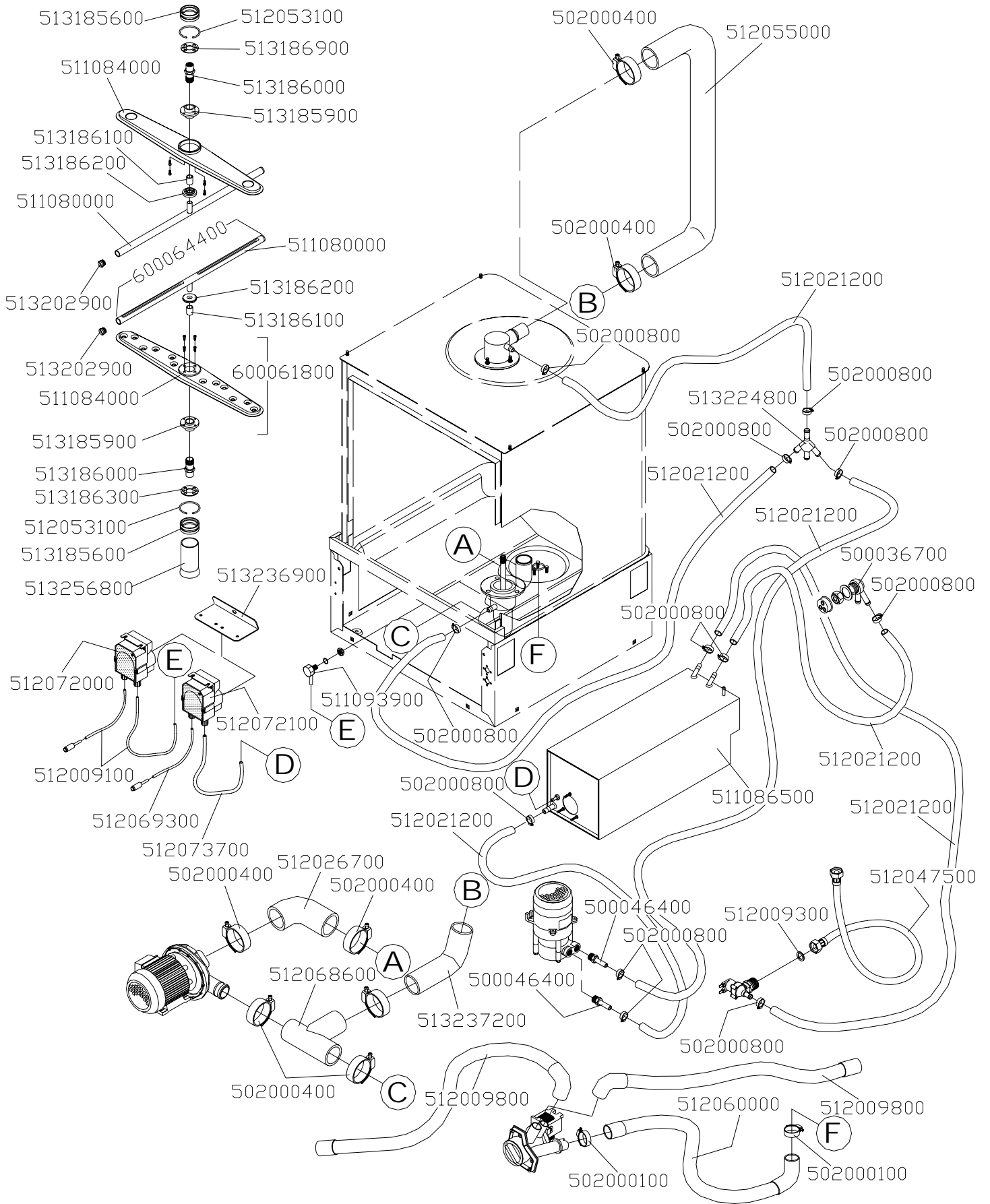
esterno/external

Mod. MLP 50



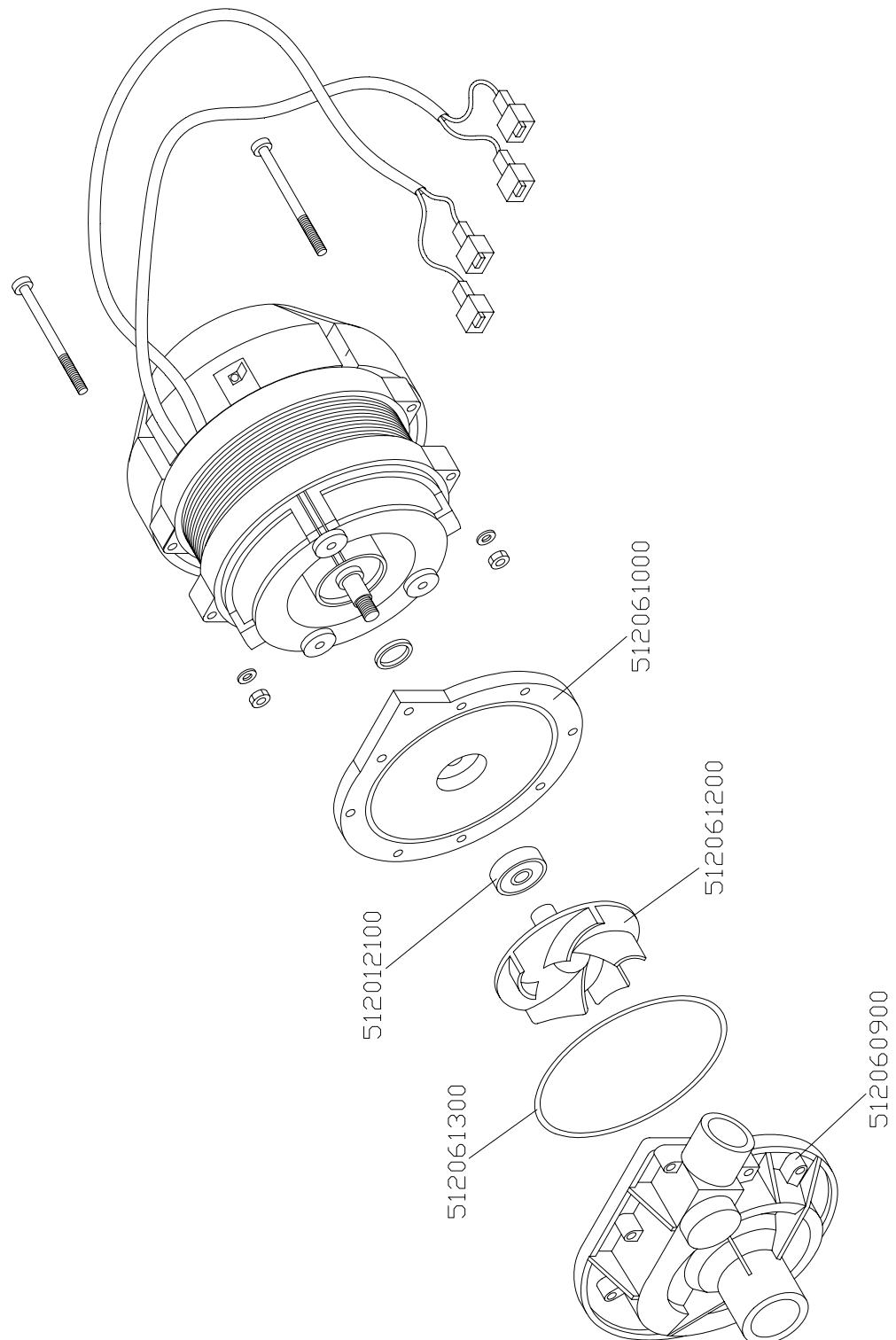
elettrico/electrical

Mod. MLP 50

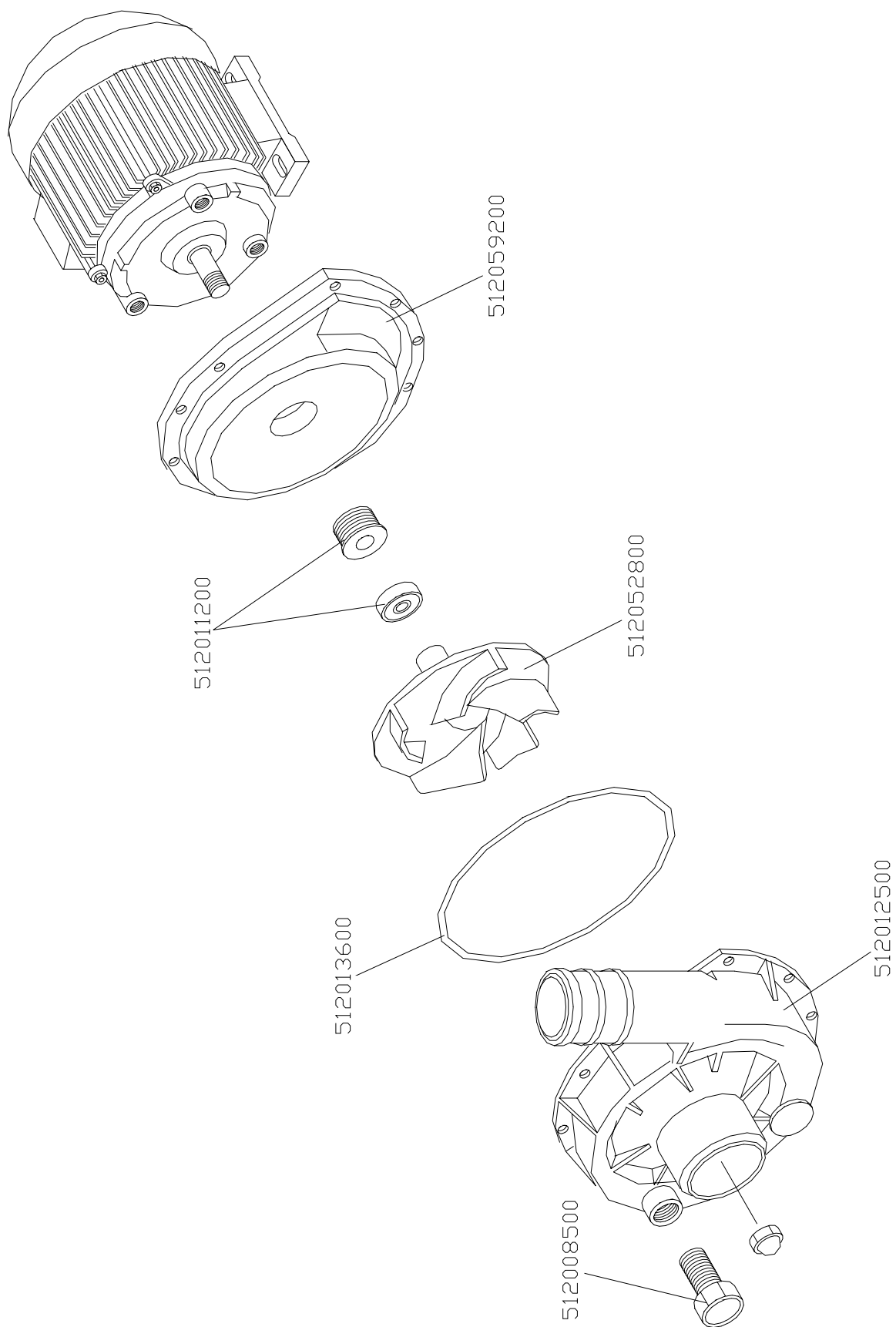


idraulico/hydraulic

POMPA HP 1 (cod. 512054800)



POMPA HP 2,7 Trifase (cod. 512049800)



hp2,7mlp

